



3 Bed House

35 Holloway
Repton
Derby
DE65 6RH

£1,725 Per Calendar Month

Fletcher
& Company

35 Holloway Derby DE65 6RH



- Available Late July 2026
- Available Long Term
- Three Bedroom Detached Property In Repton
- Recently Landscaped Rear Garden With Separate Seating Area
- Driveway Parking With Garage
- Kitchen Diner With Appliances
- Master Bedroom With En-Suite
- A Truly Immaculate Property
- Viewing Advised To Appreciate The Location & Quality Of This Property
- Groundfloor WC

Situated within an exclusive and highly regarded development in the heart of Repton, this beautifully appointed three bedroom detached residence offers an exceptional standard of living in one of South Derbyshire's most prestigious village settings.

The property provides elegant and well-proportioned accommodation throughout, perfectly suited to professional couples, families and those seeking a refined village lifestyle. The home benefits from a spacious and contemporary layout, including a stylish fitted kitchen, generous living accommodation, three well sized bedrooms, an en-suite to the principal bedroom, modern family bathroom, private rear garden and garage.

Repton is widely regarded as one of Derbyshire's most desirable villages, celebrated for its rich heritage, picturesque surroundings and outstanding sense of community. At the centre of the village is the internationally renowned Repton School, whose impressive architecture and historic grounds contribute significantly to the character and prestige of the area.

The village itself offers an excellent range of independent amenities including a traditional butcher, delicatessen, cafés, post office, village stores and several highly regarded pubs and restaurants, all contributing to a charming and highly sought-after lifestyle environment. Scenic countryside walks and nearby canal-side routes further enhance the appeal of the location, offering a perfect balance between village tranquility and modern convenience.

Despite its peaceful setting, Repton remains exceptionally well connected. Burton upon Trent lies approximately four miles to the south-west, offering extensive shopping, leisure and rail connections, whilst Derby city centre is approximately

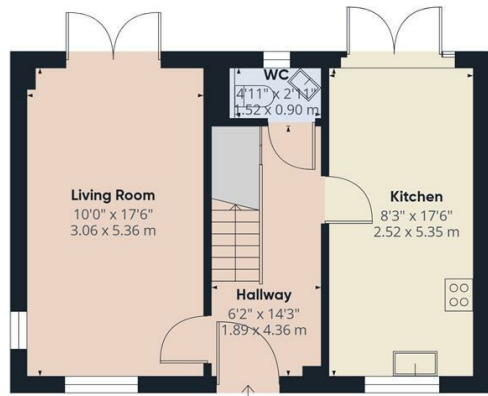




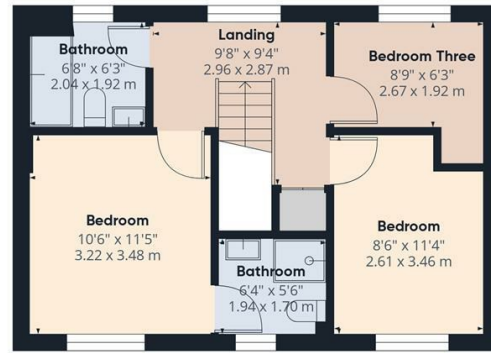
Duffield House
 Town Street
 Duffield
 Derbyshire
 DE56 4GD

T: 01332 843390

E: duffield@fletcherandcompany.co.uk
www.fletcherandcompany.co.uk



Floor 0 Building 1



Floor 1 Building 1



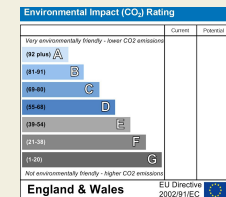
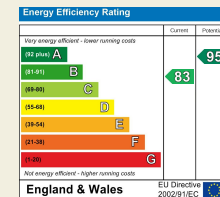
Floor 0 Building 2

Approximate total area⁽¹⁾
 1051 ft²
 97.8 m²

(1) Excluding balconies and terraces

Calculations reference the RICS IPMS 3C standard. Measurements are approximate and not to scale. This floor plan is intended for illustration only.

GIRAFFE360



These particulars do not constitute an offer or a contract neither do they form part of an offer or contract. The vendor does not make or give and Messrs. Fletcher & Company nor any person employed has any authority to make or give any representation or warranty, written or oral, in relation to this property. Whilst we endeavour to make our sales details accurate and reliable, if there is any point which is of particular importance to you, please contact the office and we will be pleased to check the information for you, particularly if contemplating travelling some distance to view the property. None of the services or appliances to the property have been tested and any prospective purchasers should satisfy themselves as to their adequacy prior to committing themselves to purchase.

Fletcher
 & Company